

# Bosch Tankless Water Heaters Vertical and Horizontal Vent Kits

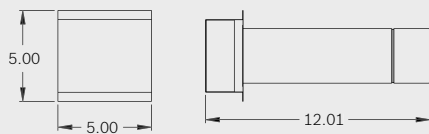
For models: GWH 715 ES, GWH 2400 ES, GWH 2700 ES, 830 ES, 940 ES



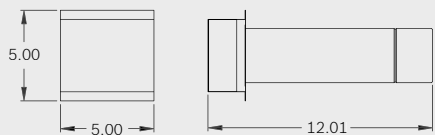
# BOSCH

## AQ3ES and 4TWHVK3SII Horizontal Vent Kits

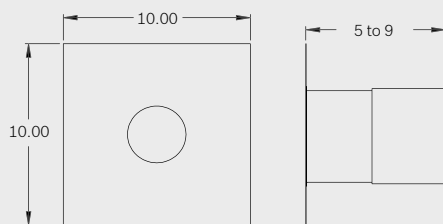
### Horizontal Vent Kit Components



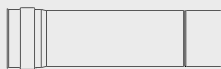
2FAIGAL03  
Intake Vent Hood w/10" Sleeve 3"



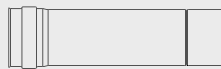
2SVSTB03  
Exhaust Vent Hood w/10" Sleeve 3"



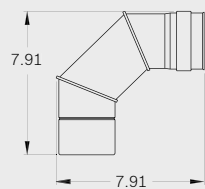
2SVSWTF03  
ZFlex Wall Thimble 3"



Z-Flex Straight Pipe 3"  
3" x 12" - 2SVEPWCF0301



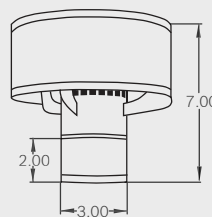
Z-Flex Straight Pipe 3"  
3" x 18" - 2SVEPWCF0301.5



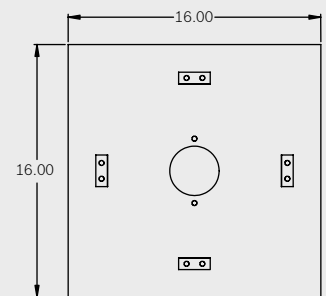
2SVEEWCF0390  
90 Degree Elbow 3"

## ES VVT Vertical Vent Kits

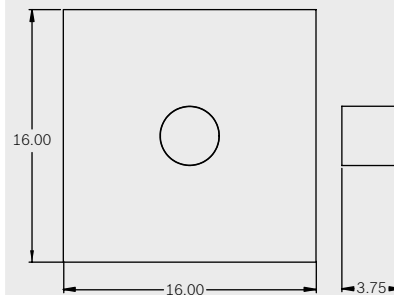
### Vertical Vent Kit Components



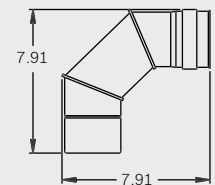
2SVSHRC03  
3" Vertical Termination



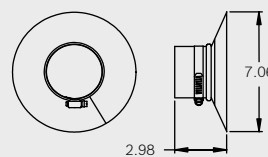
2SVSFSSF03  
3" Firestop Support



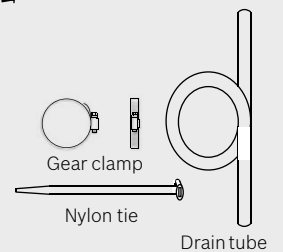
2SVSADJF03  
3" Adjustable Roof Flashing  
Flat - 6/12 Roof



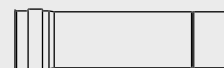
2SVEEWCF0390  
90 Degree Elbow 3"



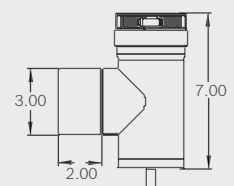
2SVSLSF03  
Top Support/Storm Collar 3"



2SVEDTK24  
Condensate Drain Kit



Z-Flex Straight Pipe 3"  
3" x 12" - 2SVEPWCF0301



2SVEVWCF03  
3" Vertical Drain Tee

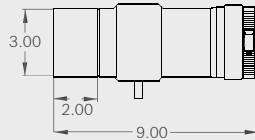
## Additional Venting Components

- Additional venting components may need to be purchased depending on the tankless water heater's venting configuration.
- To order additional Z-Flex components, contact your dealer or Bosch Thermotechnology Corporation.

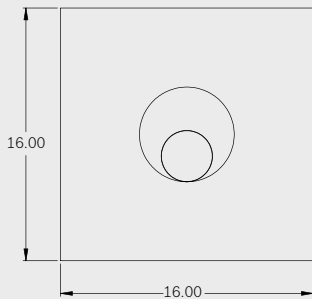
### Additional Z-Flex Venting Components



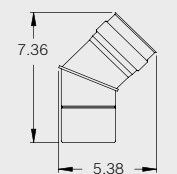
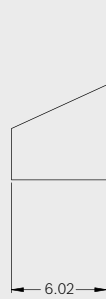
Z-Flex Straight Pipe 3"  
 3" x 6" - 2SVEPWCF03.5  
 3" x 12" - 2SVEPWCF0301  
 3" x 18" - 2SVEPWCF0301.5  
 3" x 2' - 2SVEPWCF0302  
 3" x 3' - 2SVEPWCF0303  
 3" x 4' - 2SVEPWCF0304



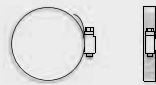
2SVEDWCF03  
 3" Horizontal Drain



2SVSADJSF03  
 3" Adjustable Roof Flashing  
 7/12 - 12/12 Roof



2SVEEWCF0345  
 45 Degree Elbow 3"



7HS44XX  
 Gear Clamp 3"



## WARNING

THE TANKLESS WATER HEATER INSTALLATION MUST CONFORM TO THE REQUIREMENTS OF THE TANKLESS WATER HEATER'S INSTALLATION MANUAL, THE VENT MANUFACTURER'S INSTALLATION MANUAL, THE NATIONAL FUEL GAS CODE AND LOCAL CODES/REGULATIONS

## Appliance Connection

- Refer to the appliance manufacturer's installation manual for proper method of joining Z-VENT to the appliance collar.

**IMPORTANT NOTICE:** When any of the previous installation procedures are completed, be sure to go over the entire system to make sure all joints are secure and sealed correctly. A qualified inspector must check the entire system at least once annually following initial installation to maintain the ZFLEX warranty.



# BOSCH

Bosch Thermotechnology Corp.  
 50 Wentworth Avenue  
 Londonderry, NH 03053

Tel: 1-866-642-3198

Fax: 1-603-584-1687

[www.boschhotwater.com](http://www.boschhotwater.com)

For professionals: [www.boschpro.com](http://www.boschpro.com)